



HUBTRACK[®]
CORP





- + Efficient technology for sustainable and cost-efficient mobility.
- + Compliant to underhung monorail industrial standards to safely transport people and equipment above ground.
- + 3 patented and validated models ready for market.

HubTrack® A-20



HubTrack® A-22



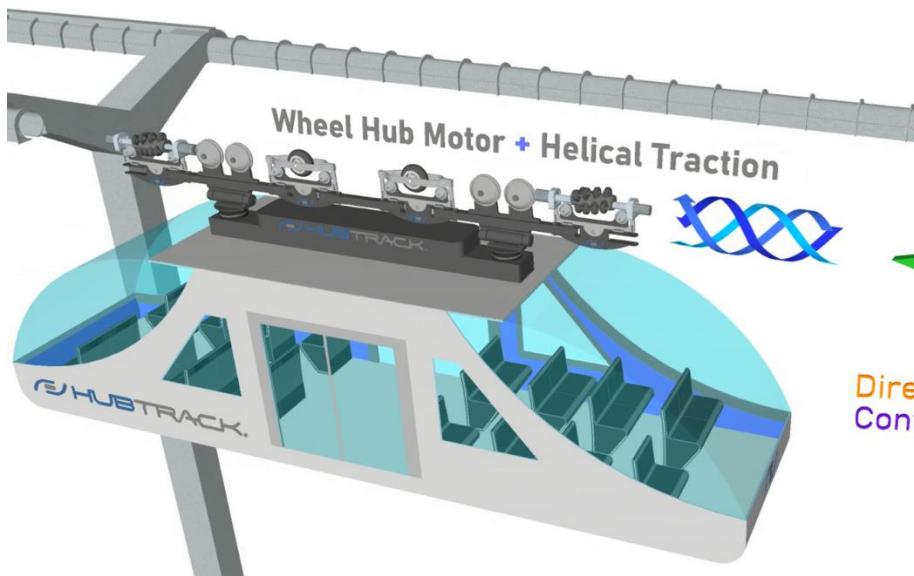
HubTrack® B-22



Main links to the HubTrack.com website

- **Products** hubtrack.com/drive-systems
 - + **Advantages** hubtrack.com/features-advantages-hubtrack
 - + **Benefits** hubtrack.com/benefits-hubtrack
- **Material Handling Applications** hubtrack.com/market-applications
- **People Mobility Applications** hubtrack.com/people-mobility

Efficiency with Helical Traction & Fast Technologies.



- + Powerful.
- + Energy-Efficient.
- + Safe.
- + Cost-Efficient.



High-Performance Solutions Tailored to Your Mobility Needs.



- + Modular design of vehicles and rails.



- + Multiple configurations for a variety of applications, needs and constraints.

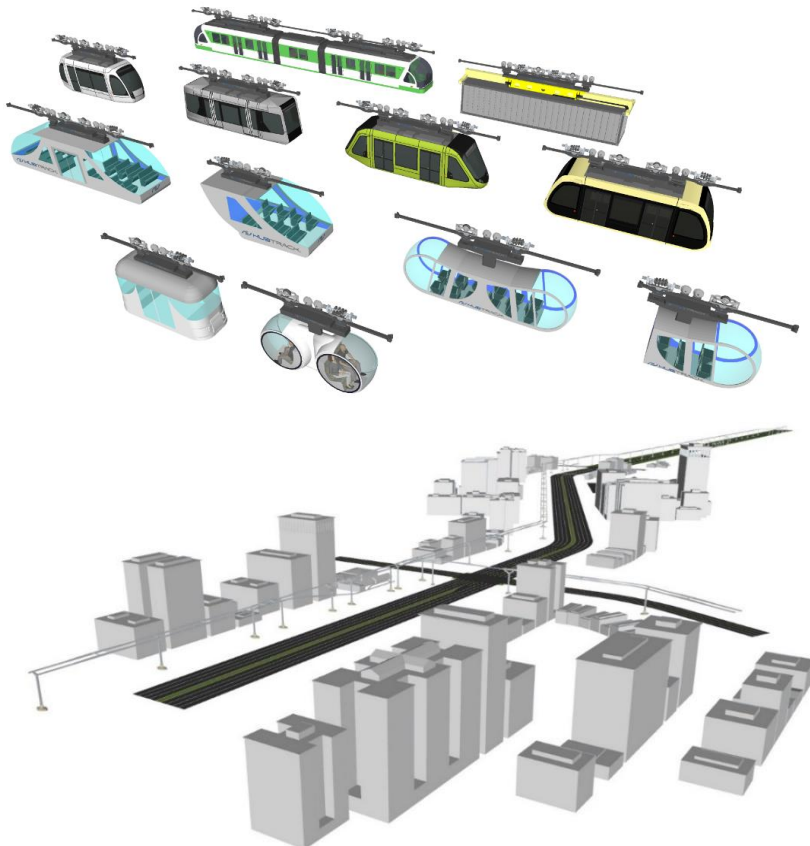
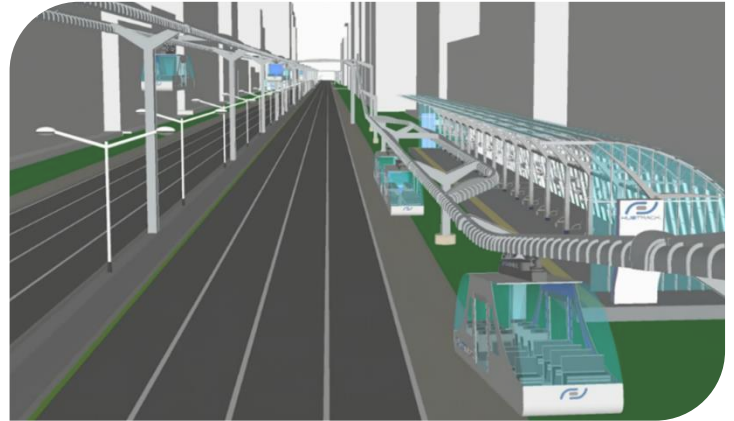
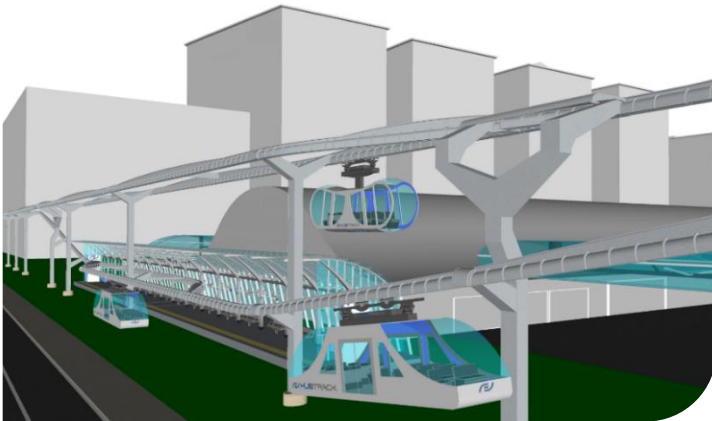


- + Variable and direct logistics flow, protected from outside weather and ground level risks.



- + Very low operational costs of energy consumption and maintenance.
- + Added value to rolling equipment and capital assets.

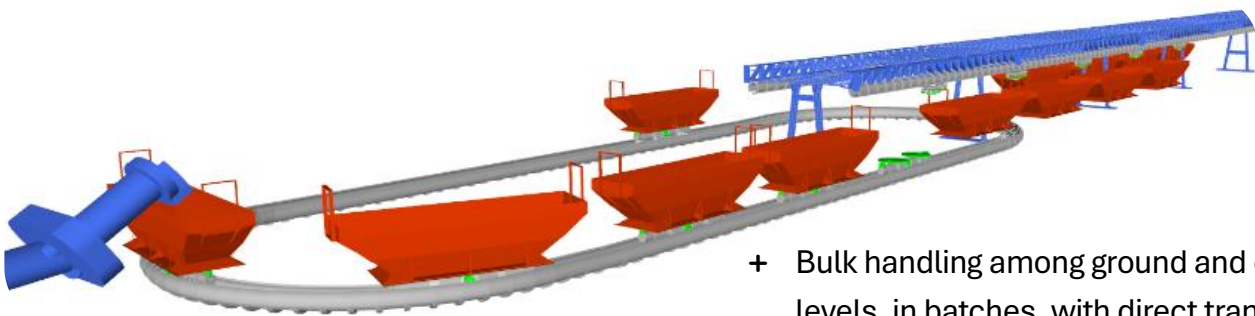
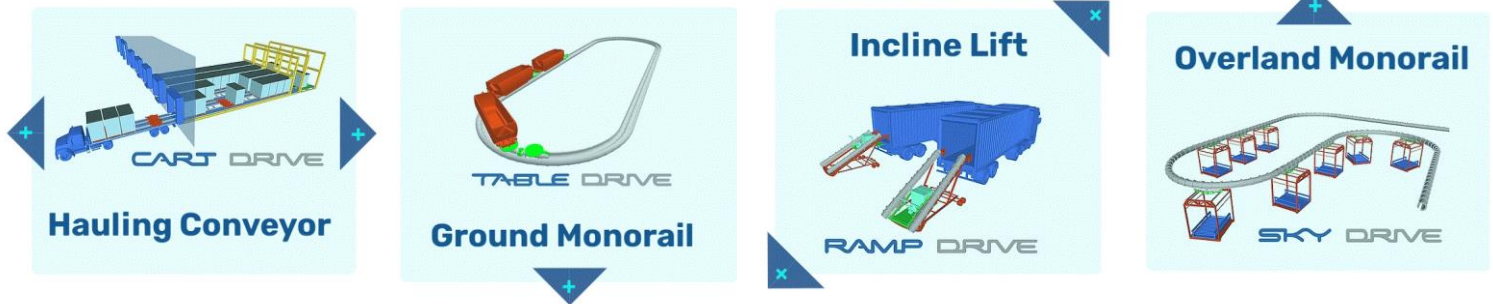
Comfortable, Fast & Safe People Mobility.



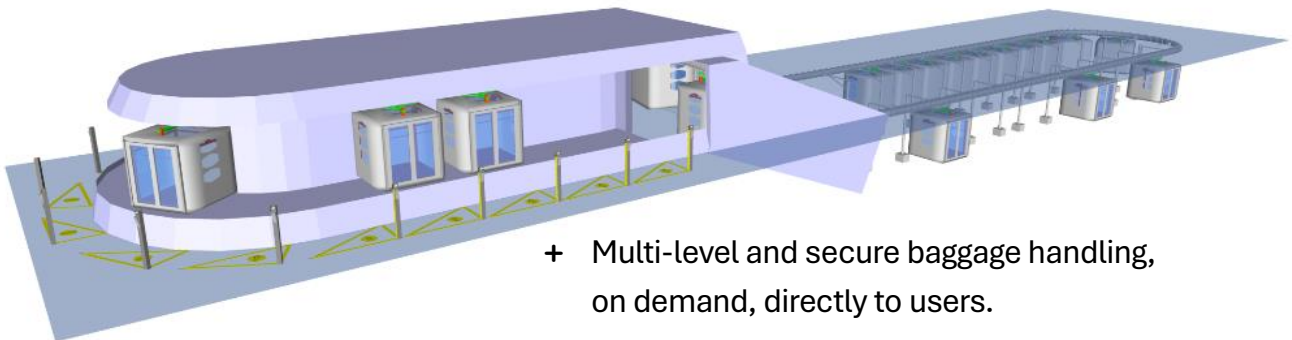
- + Variable and direct flow of travel between origin and destination, protected from all risks.
- + Availability of ride on demand.
- + Direct and frequent access points to pool in various transportation means.
- + Rolling equipment adaptability to vehicle dimensions and user needs.
- + Simple and light overland infrastructure.
- + Affordable and rapid network implementation above ground which provide direct ground level access.

Profitability & Quality of Production & Distribution Services.

- + Optimization of the logistics flow of material handling operations.

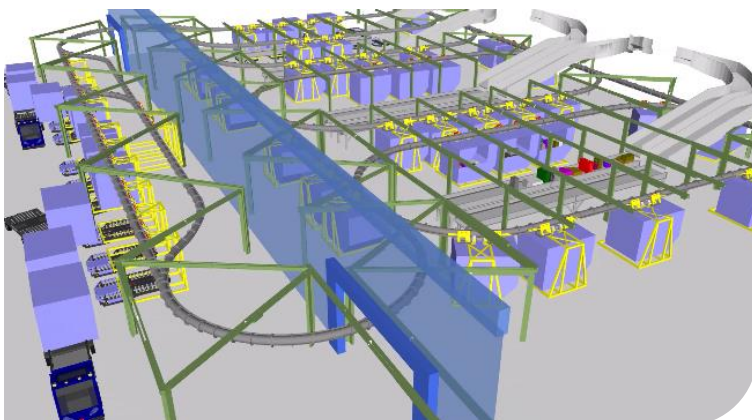


- + Bulk handling among ground and overland levels, in batches, with direct transshipping.



- + Multi-level and secure baggage handling, on demand, directly to users.

- + Integrated handling of transshipping, storage and sorting.



- + Agile overland handling for batch production and distribution.

